

IPv6 deployment in “FLET’S Hikari Premium”

Takashi Uematsu

t.uematsu@west.ntt.co.jp

Technology Innovation Dept.

NTT West

What is “FLET'S Hikari Premium” ? [1]

- Fiber access
 - GE-PON, VDSL100Mbps for apartments
- IPv6 base
- Broadband network service
 - Native IPv6 routing network

What is “FLET’S Hikari Premium” ? [2]

- Latest in FLET'S access line services
 - Started in Mar. 2005
- Service area: 30 pref.
(coverage of NTT-West)
 - Over 2M subs. (2005.3 ~ 2007.10)

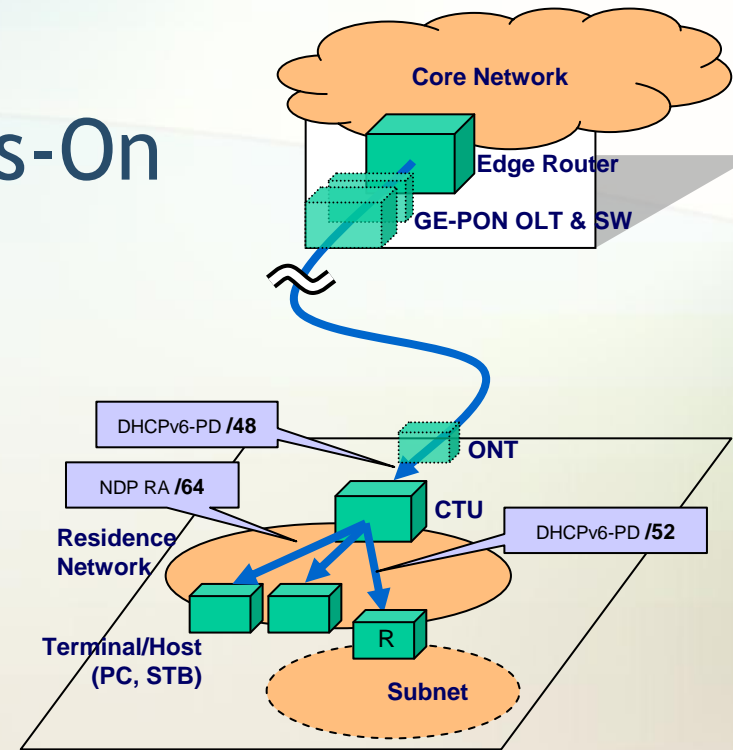
“FLET’S” Service Overview

- Started with “ISP access service” in Dec. 1999
 - i.e. ISDN flat rate service for the “dial-up”*
 - Served by tunneled session on IP-network
- Also, offers VPN service, Contents and Communication tools
- Supports several type of access line
 - ADSL, Media Converter (MC), PON, VDSL for apartments, WiFi at public
- Core Network was IPv4 (*before “Premium”*)

What's new in "Hikari Premium"

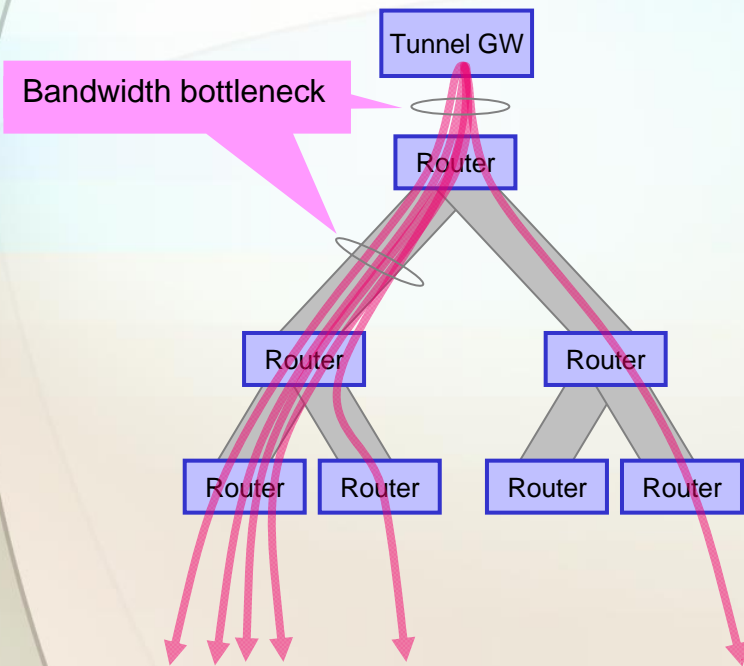
[1]

- More broadband & Always-On
- Native IPv6 service
 - Multicast support
 - QoS featured
 - Address
 - /48 assigned per subscriber
 - CTU serves /64 (NDP), /52 (DHCPv6-PD)

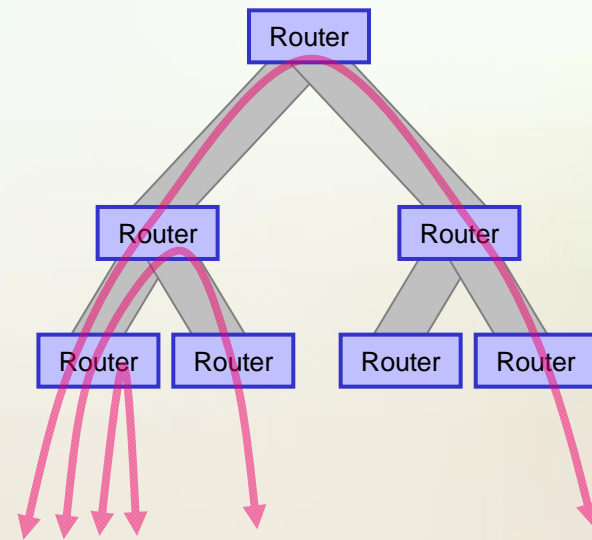


Architectural change

The FLET'S architecture:



Before "Premium"



"Premium"

"Premium" has enabled direct-routing capability.

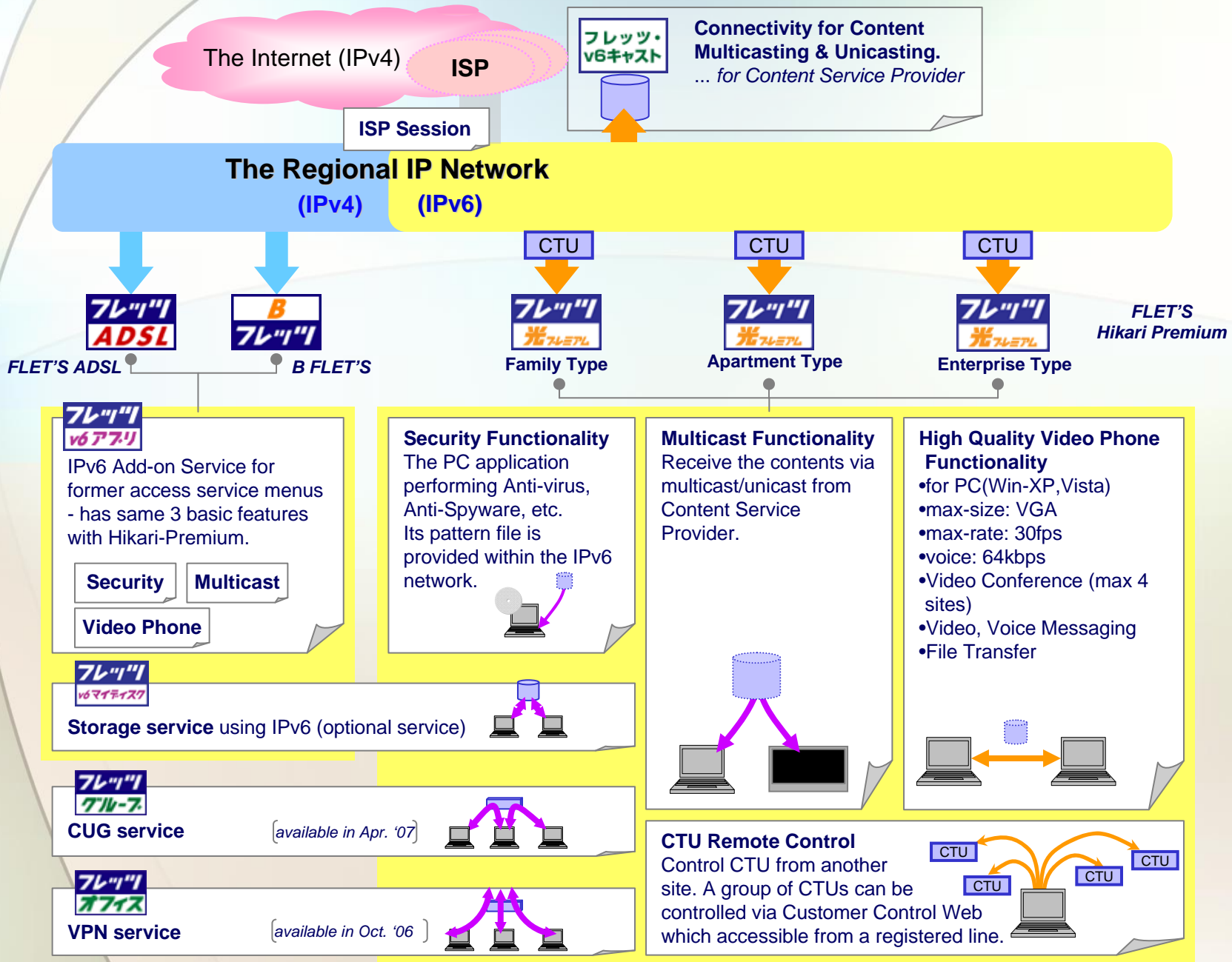
What's new in "Hikari Premium"

[2]

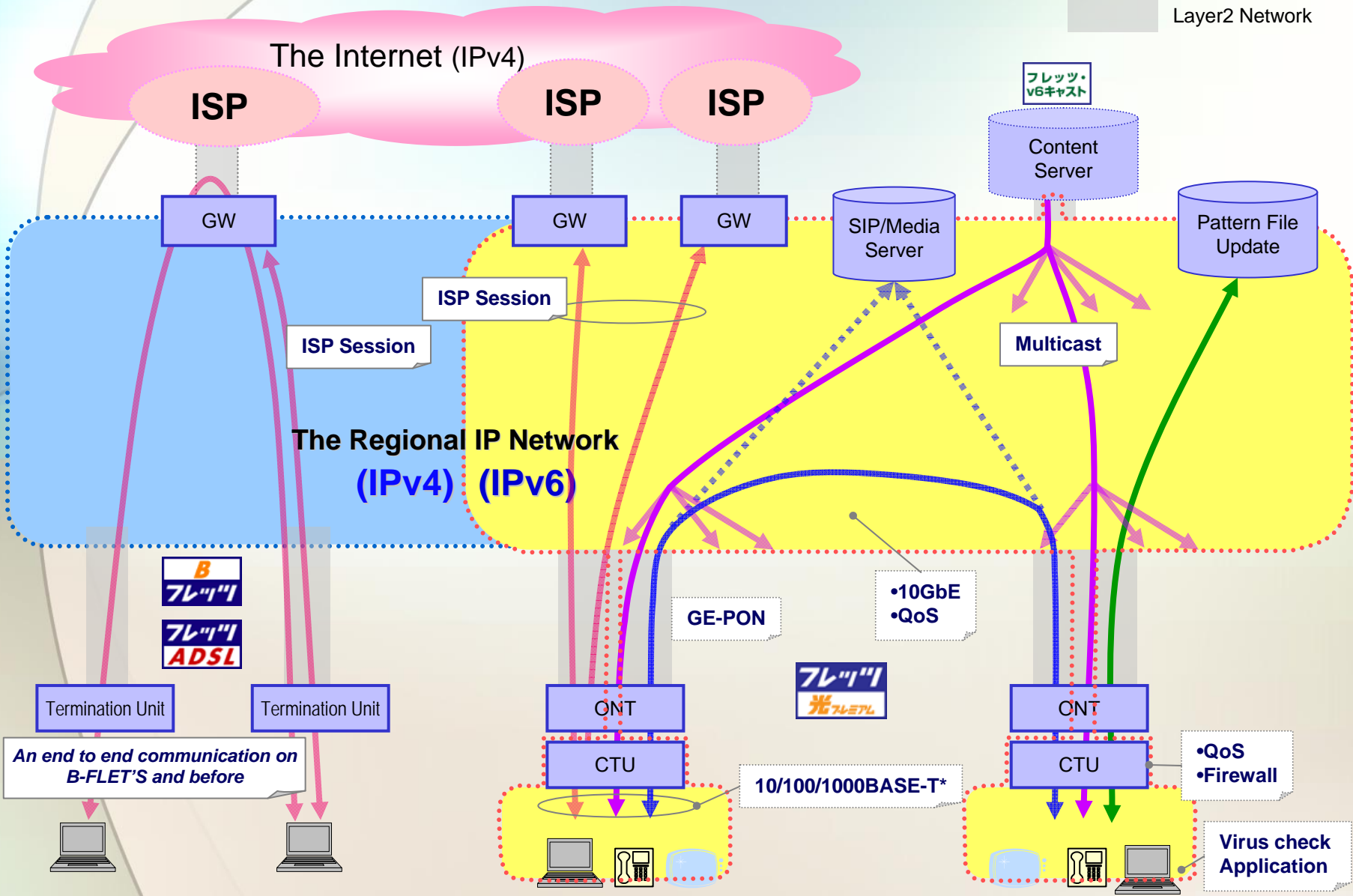
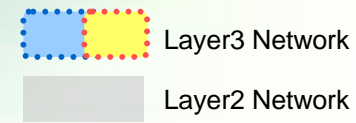
- "CTU" -- *Customer Terminal Unit*
 - CPE: IPv6 router in the home
 - Provide IPv4 tunnels
 - NAT, Filtering, SPI, DHCP(v4) are equipped
- Security-suite software* for PC
- High quality video phone client*
- TV channels, VoD services provided by ASPs

* bundled 1 license/line

Service Overview of "FLET'S Hikari Premium"



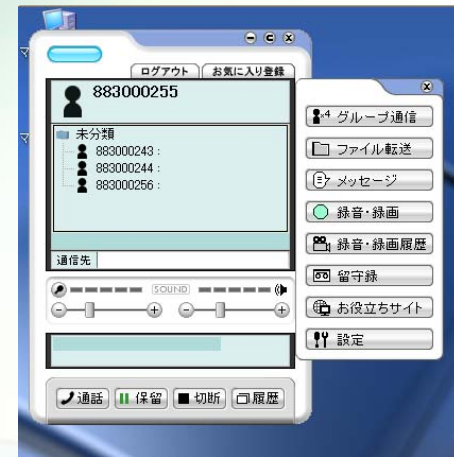
Network Overview of "FLET'S Hikari Premium"



*1000BASE-T is Enterprise Type only

Application example: Video Phone

- Purely IPv6 based (no IPv4 required)
- Using SIPv6
- MPEG-4 (up to VGA@30fps)
- Conference function supports up to four sites
- Software comes with some tools:
 - File transfer
 - Video messaging service
 - Session recording



Software Client



Appliance Client

Examples of using IPv6 on Hikari Premium

Customer cases of using “v6cast” interface:

- **Three providers carry IPTV service**
(VoD & channel-service)
- **Enterprise use of data delivery**
(a famous convenience store chain)
- **Grid Computing Service “Hikari Grid”**